



For more information visit [fleetsoft.com](http://fleetsoft.com)

# Fleetsoft GPS/Telematics Interface

## Options

### Odometer and Hour Meters

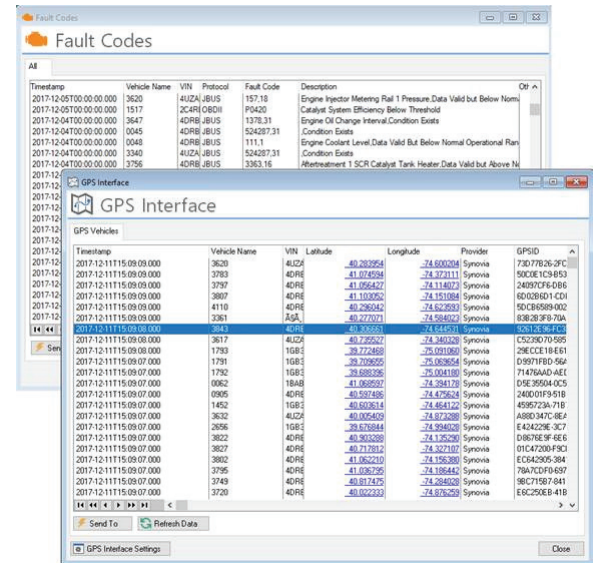
Vehicle odometers will update automatically from data brought in from current GPS/telematics provider. This will then flag PMs automatically and warn the mechanics that a work order needs to be done. Fleetsoft brings in the GPS coordinates of location of the vehicle and displays it on a map.

### Telematics Data

Filtered fault codes will be sent to Fleetsoft and the mechanic will be shown the current Fault Codes alerts from the vehicle from within Fleetsoft.

### DVIR Data

Failed inspection data will be sent to Fleetsoft as a Reported Problem and will warn the Mechanics to fix the problem. Once it is fixed, it is removed from the current problem list.



## Current Systems Supported *(more coming soon)*



No more manual entry of odometer readings!