

# Installation

---

## Minimum System Requirements

**OS:** Windows XP SP3 or higher (Vista, Win7, Win8, Server 2003, 2008, 2012)

**CPU:** 1.0 GHz (2+ GHz Recommended)

**RAM:** 512 MB (2+ GB Recommended)

**Display:** 1024x768 resolution

## Installation Notes:

1. You need to be logged in with Administrator rights to install this software.
2. A “Standalone System” must meet the minimum requirements to run SQL Server 2008 R2 Express edition.
3. You must install only one of the “Standalone System” or the “Network Server” installation types, and only on one computer. This installation will manage the database creation process as well as database upgrades.
4. You can install the “Client Only” installation type on as many workstations and servers as you wish, or not at all.
5. The program can run directly from a shared network folder or mapped drive.
6. SQL Server Native Client (2008, version 10.0) driver is recommended, but not required, to run the program. Older versions of Server Native Client (2005) can also be used.
7. Truck Tracker installation might require other server components such as Windows Installer 4, .NET Framework 3.5, or SQL Server Express. The components will be downloaded and installed automatically without any additional configuration.
8. For multiple user systems, make sure Windows Firewall is not blocking inbound access to the SQL Server application (executable), or the SQL Server dynamic ports being used by your named instance.

## Deployment Overview

Truck Tracker software uses Microsoft SQL Server as the database backend. The setup program can automatically install a new instance of SQL Server 2008 R2 Express for you if you need one, or you can use your own existing instance of SQL Server 2008 or higher.

### Single User

Install the “Standalone System” installation type on the workstation using the program. The service component will automatically create full backup files each night that can be copied to another location for archiving.



Truck Tracker® Standalone System

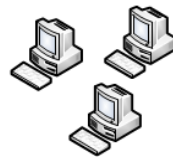
Optionally you can choose “Network Server” installation type to install the Truck Tracker database into an existing SQL Server 2008 or higher, that you will manage on your own.

### Multiple Users

Install the “Standalone System” installation type on a workstation or server that other users will connect to. Typically this will be on a server, but any computer can potentially host the database. Install the “Client Only” installation type on the other workstations that will use the program, or share the application folder on the network. All installations need to be upgraded to the same version if one is upgraded.



Truck Tracker® Standalone System

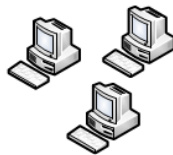


Truck Tracker® Client Only

Optionally you can choose “Network Server” installation type to install the Truck Tracker database into an existing SQL Server 2008 or higher, that you will manage on your own. You can install the “Network Server” installation type on the same machine as your existing SQL Server, or on another computer in the same local area network, such as an application server or Terminal Server.

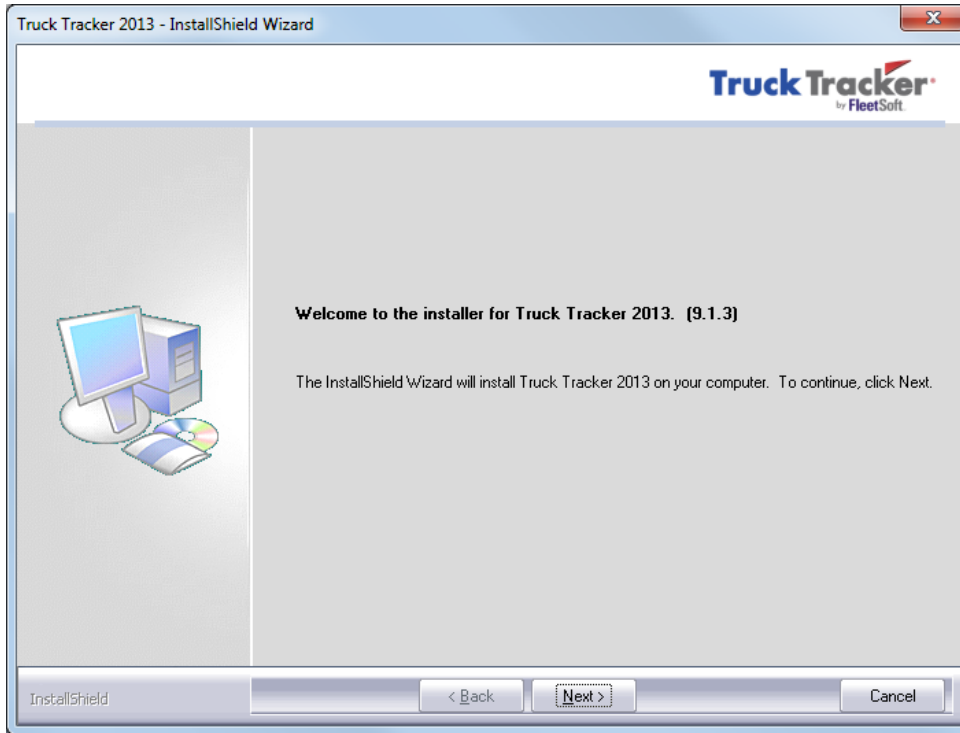


Truck Tracker® Network Server

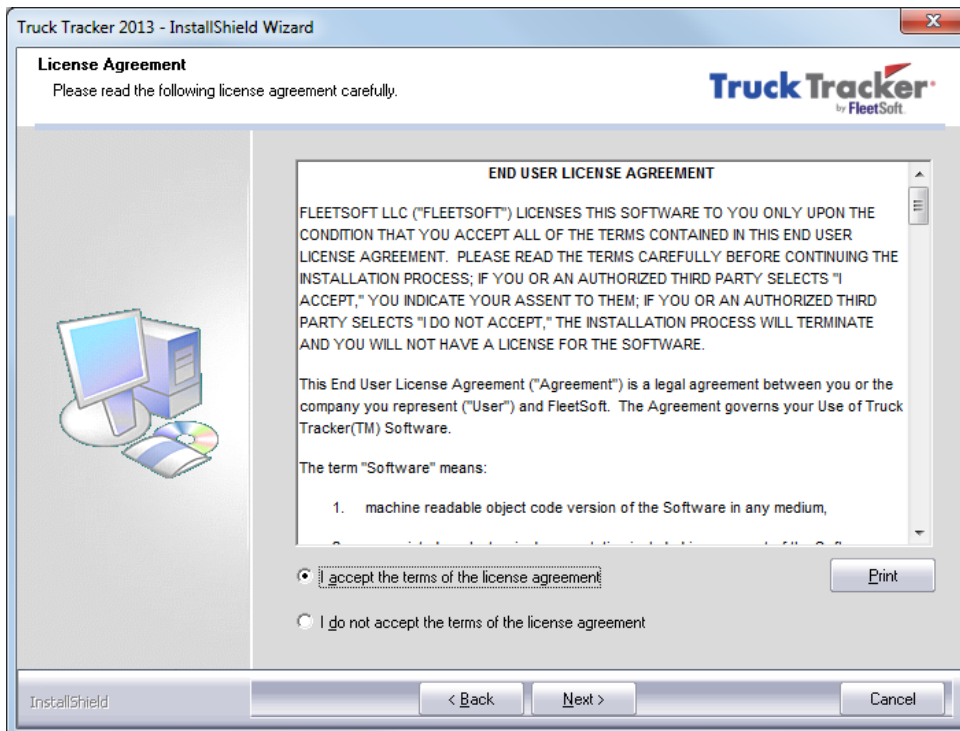


Truck Tracker® Client Only

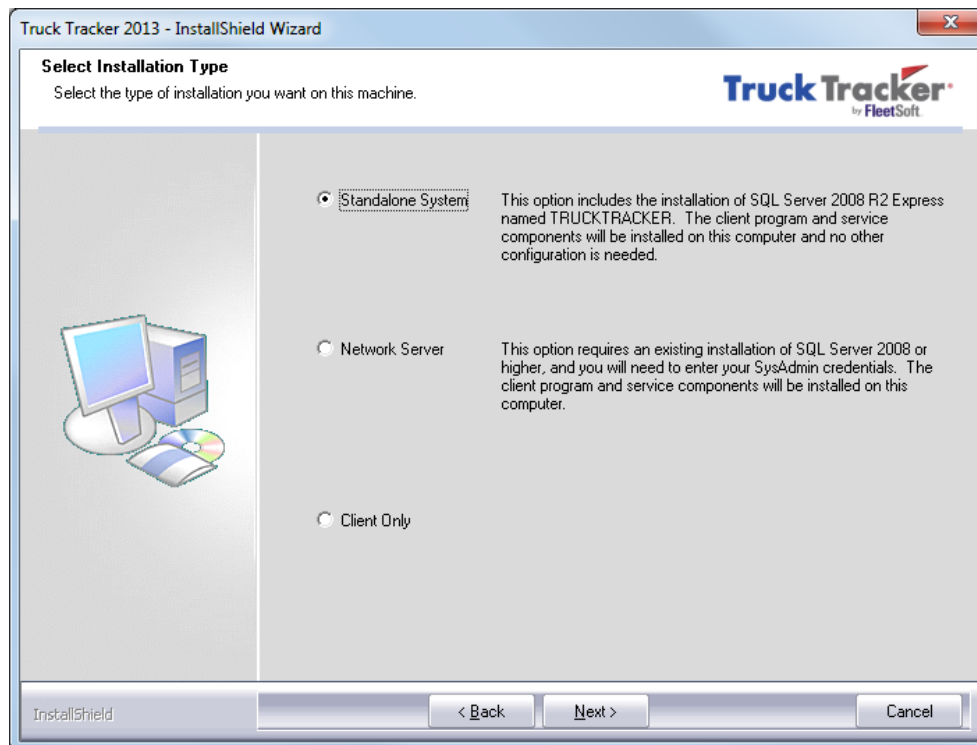
## Step by Step Installation



Welcome to Truck Tracker installation program, please press “Next” to continue.



Review the License Agreement. **Choose “I accept the terms of the license agreement” to accept the agreement.** If you choose to reject the agreement, the installation will not continue. You can also choose to “Print” the license agreement.



Choose the type of installation for this machine:

### **Standalone System**

This option will install the Truck Tracker program, windows service component, and setup a new instance of SQL Server 2008 R2 Express named TRUCKTRACKER to run the database on this machine (subject to system requirements).

With this option you don't need to worry about SQL Server software at all, the setup will install and configure everything for you automatically.

### **Network Server**

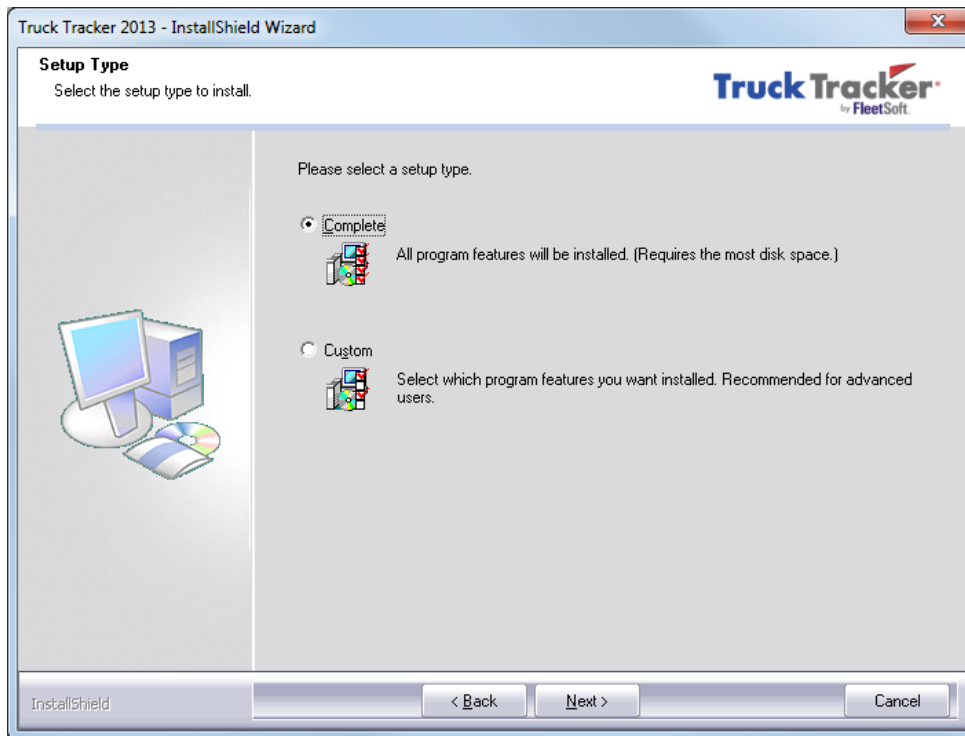
This option will install the Truck Tracker program and windows service component on this machine. You will be prompted for the name of an existing instance of SQL Server 2008 or higher and *Sysadmin* credentials to create the TruckTracker database.

With this option you need to manage your own instance of SQL Server and the configuration on your own.

### **Client Only**

This option will install only the Truck Tracker program and client components on this machine.

*You must install only one instance of either the Standalone System or Network Server installation type first.*



If you want to install the program files into a custom location, choose “Custom” and press “Next”.

To install into the default locations choose “Complete” and press “Next”.

#### **Default Locations**

Truck Tracker program files:

***C:\Program Files\FleetSoft\Truck Tracker***

SQL Server 2008 R2 program files:

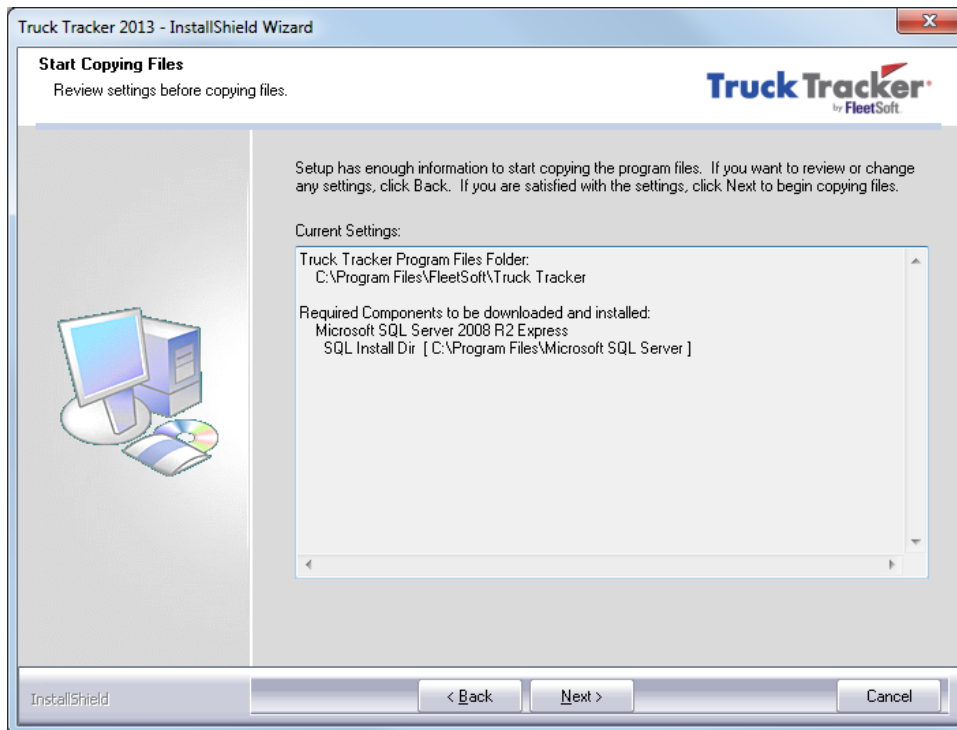
***C:\Program Files\Microsoft SQL Server***

SQL Server backup files:

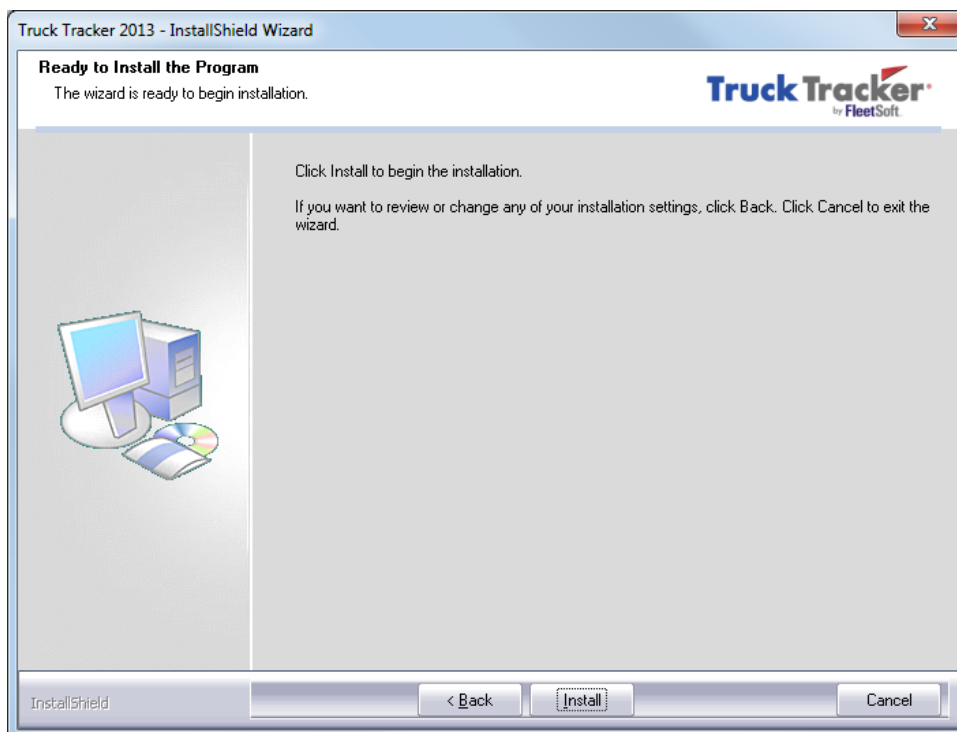
***C:\Program Files\Microsoft SQL Server\MSSQL10\_50.TRUCKTRACKER\MSSQL\Backup***

SQL Server data files:

***C:\Program Files\Microsoft SQL Server\MSSQL10\_50.TRUCKTRACKER\MSSQL\Data***

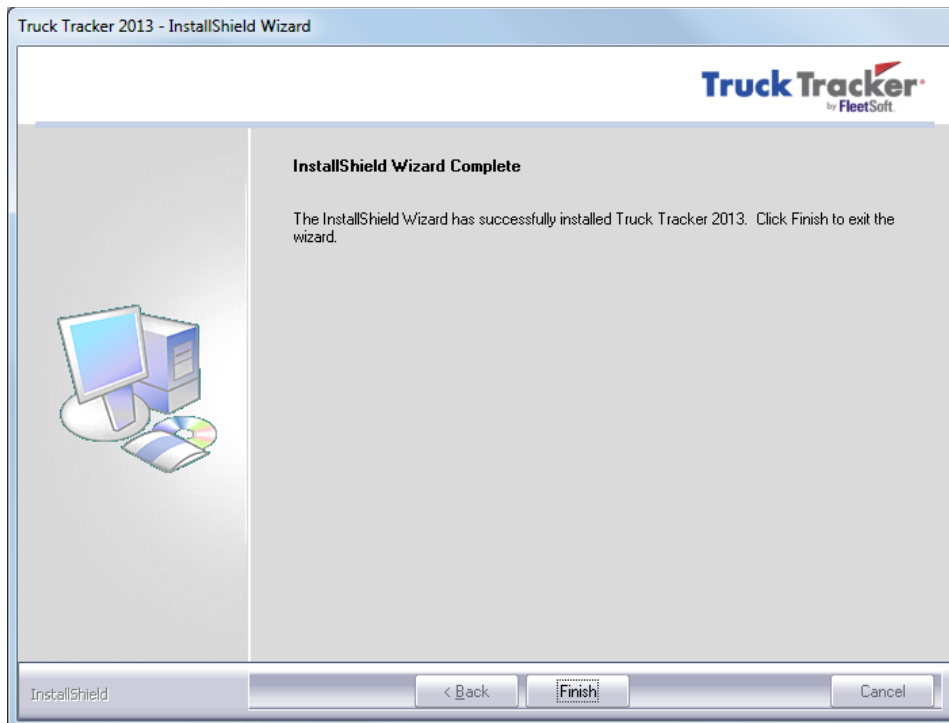


Review the installation settings and press “Next” to continue.



Choose “Install” to begin the installation process.

The “Client Only” option should take about 1-3 minutes to complete installation. The “Standalone System” and “Network Server” options should take between 5-20 minutes to complete depending on the number of components that need to be installed and the speed of your system. You should allow sufficient system resources for the installation process and wait for the installation to finish before running any other programs.

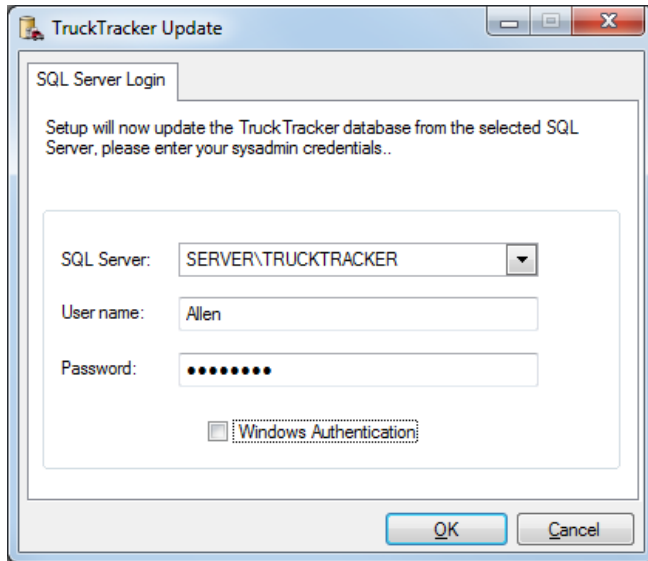


Once the installation is complete, choose “Finish” to exit the installer.

### **Choosing an existing SQL Server**

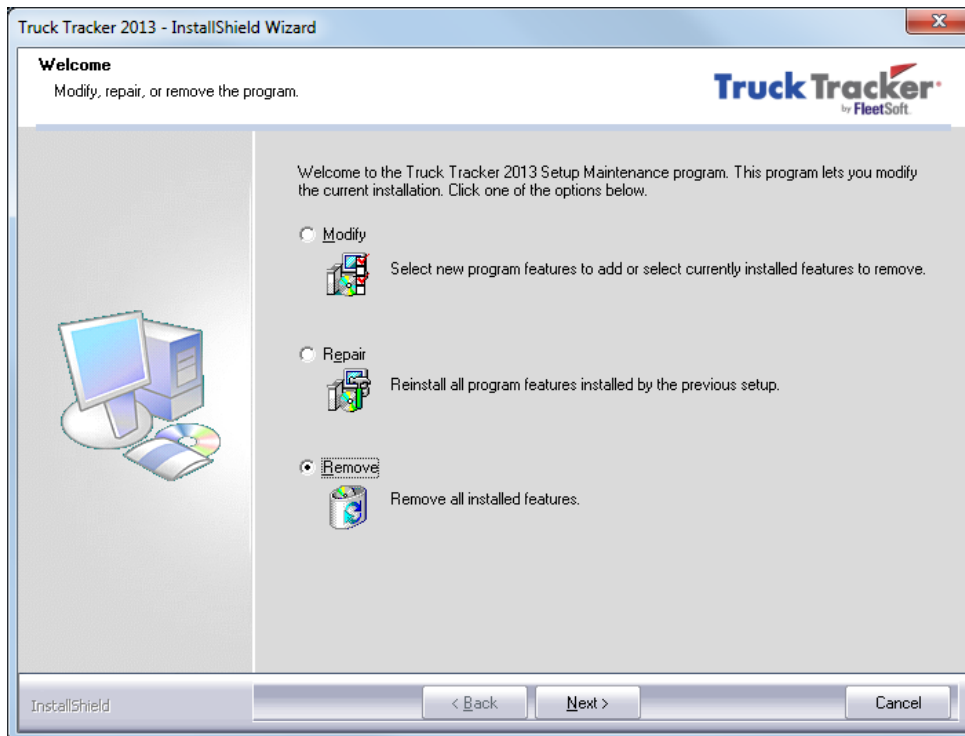
When you install the “Network Server” installation type, you need to choose an existing instance of SQL Server to install the Truck Tracker database and default login accounts into. For Truck Tracker program to work properly, the Authentication Mode must be configured for SQL Server Authentication. Any custom login accounts used to access Truck Tracker must have VIEW SERVER STATE permission.

Press the drop down button to view a list of SQL Servers running on your network. Enter your Sysadmin credentials to create the new database objects. Press “OK” when you done, or “Cancel” to quit the setup.



## Uninstallation

To uninstall TT software we recommend that you run the original installation media (either downloaded file or CD), and choose "Remove". Or you can uninstall the program using Windows Control Panel.



When uninstalling a Standalone System or installation, you will be prompted to automatically uninstall the private SQL Server Express instance (TRUCKTRACKER) used by the software.



If needed, you can uninstall the SQL Server Express instance (TRUCKTRACKER) manually under the Windows Control Panel. If you have other instances of SQL Server installed, they will be shown on the screen. **Only remove the instance named TRUCKTRACKER.** The data files and backup files will not be removed; you must remove these from the system manually.

### **Error Messages**

If you receive an error message during installation, you will need to find out what the problem is first, and then try to reinstall the software again. Make sure you run the installation program as an Administrator user.

If you are installing the Standalone System option with SQL Server Express, check the SQL installation log files for the error message at:

### **C:\Program Files\Microsoft SQL Server\100\Setup Bootstrap\Log\**

Sometimes the computer is waiting for a reboot after installing updates, so the computer must be restarted first before installing SQL Express. Or if you are trying to install on a domain controller then the setup will not work. Other times there is a requirement or condition that is not met, check the Summary.txt log file for more information.

Most common error messages are regarding the installation of SQL Server Express or one of its prerequisites, such as SQL Native Client 10.0, Windows Installer 4.5, and .NET Framework 3.5.

If you receive an error message regarding one of these packages, then try to download and install the specific package manually from the web. Then run Truck Tracker installation again. For example, if you receive an error such as this one: “.NET Framework 3.5 is required, but could not be installed”, then try to download and install the package manually from Microsoft’s web site. An internet search should help you find the right download link.